



Traffic Advisory

To: Pearland Police Department
Pearland Public Works
Pearland ISD

Pearland Fire Department
Pearland Communications

From: **Jaime Dino**
Construction Manager, Capital Projects

Date: August 5, 2019

Subject: **HUGHES RANCH ROAD WEST BOUND LANE CLOSED AT
SOUTHDOWN DRIVE INTERSECTION STARTING 8/07/19 FROM 9
A.M. TO 3 P.M. ONE DAY ONLY.**

Starting Wednesday, August 07, 2019 from 9:00 a.m. to 3:00 p.m., the west bound lane of Hughes Ranch Road will be closed at the intersection of Southdown Drive. This closure will facilitate activities to determine existing infrastructure locations. Traffic going westbound along Hughes Ranch Road will be detoured to Southdown Drive to Lambeth Drive during activity.

Additional Traffic Advisories will be published as warranted to inform the public of new developments on the project, including changes in traffic circulation patterns as the work progresses.

Please see attached detour map for details and detour signs will assist in navigating the affected area. Please obey all construction zone signs and flaggers, and be aware of construction equipment and personnel within the work zone. The City urges drivers to exercise additional caution when driving in this area.

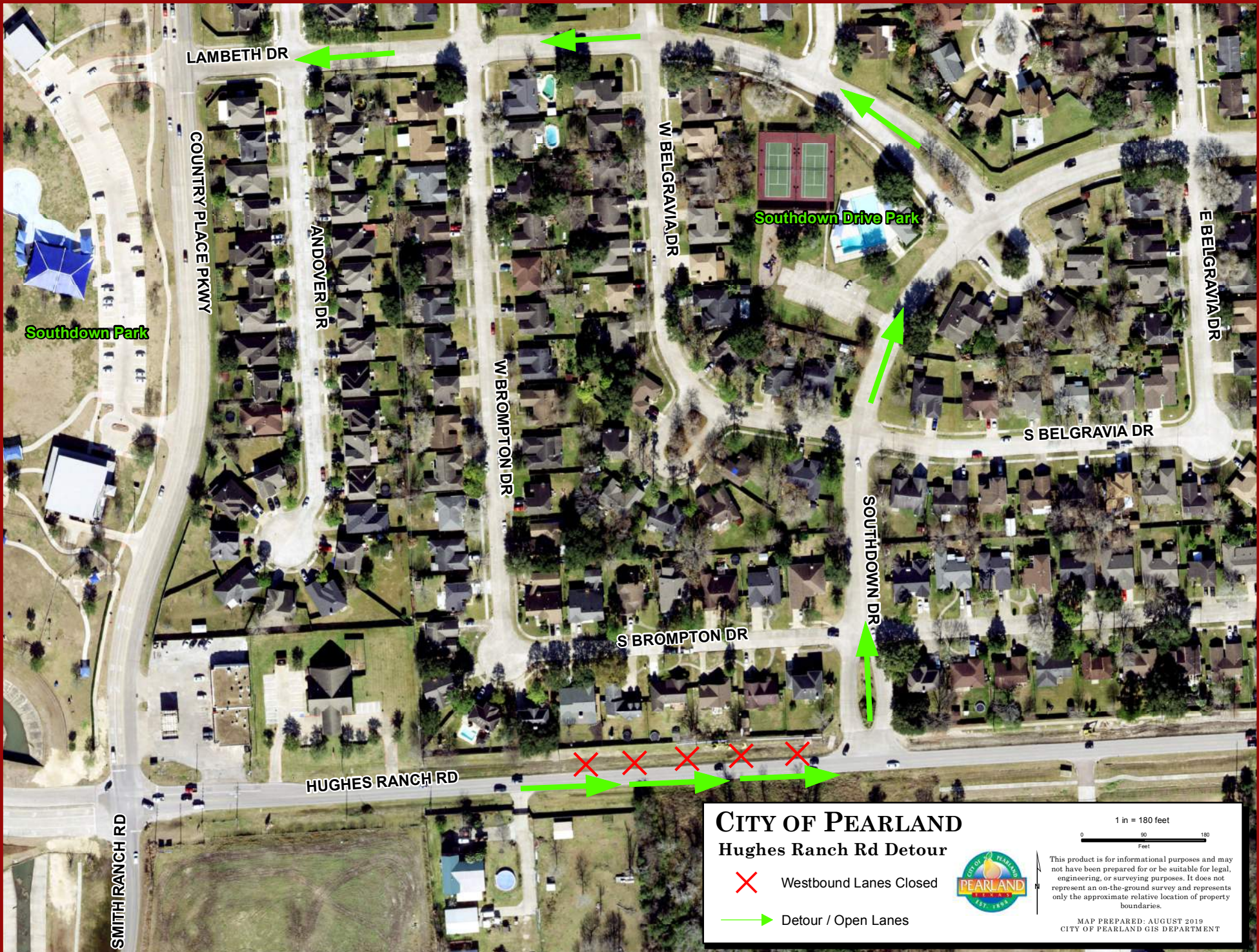
Contact information:

Ricky Williams, CobbFendley, Inspector	281.622.0097
Jaime Dino, City of Pearland, Construction Manager	713.775.0009

Thank you,

Jaime Dino
Construction Manager
jdino@pearlandtx.gov

End of Traffic Advisory



CITY OF PEARLAND
Hughes Ranch Rd Detour

✕ Westbound Lanes Closed
➔ Detour / Open Lanes



1 in = 180 feet
 0 90 180
 Feet

This product is for informational purposes and may not have been prepared for or be suitable for legal, engineering, or surveying purposes. It does not represent an on-the-ground survey and represents only the approximate relative location of property boundaries.

MAP PREPARED: AUGUST 2019
 CITY OF PEARLAND GIS DEPARTMENT